

Integrating Hanwha Camera Edge Events and Alarms with XProtect

with
BTX (Bridge-to-XProtect)

Juan Acosta- Network Specialist
Paul Dillon - Video Analytics Specialist

App-Techs Corporation
www.app-techs.com



App-Techs – What We Do

Enhancing situational awareness to improve security outcomes

Design, install, support, maintain XProtect video systems

Specialties

- Education
- Hospitals & Nursing Homes
- Federal & State Agencies
- Municipal Safety & Security
- Property Management
- Manufacturing
- Banking

Build and deliver Pre-configured VMS + Video Analytics Servers

- EasyNVR XProtect Servers
- EasyVA Video Analytics Servers

Hanwha Silver Channel Partner, Dealer



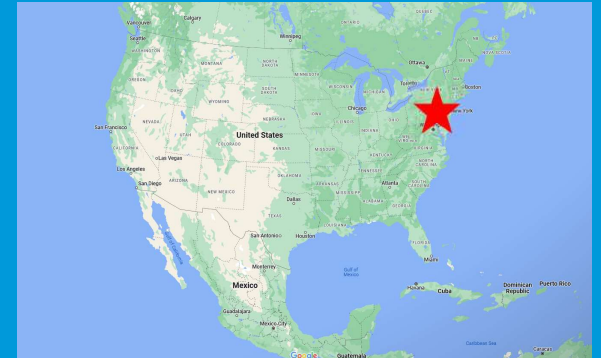
Milestone Premier Partner, Dealer

- 97% Care Plus Renewal Rate



Develop Software + Third-party Integrations for XProtect

- Health Utility Monitor (HUM)
- Bridge-to-XProtect (BTX)
- Smart Client Plug-ins (Spotlight & Latest Alarm)
- DMap (Device Map)



Location: Lancaster, PA, USA
(1 hour west of Philadelphia, PA)

of Employees: 19

Surveillance systems clients in
metro Washington, DC,
Philadelphia, Baltimore,
Pennsylvania, and NJ.

Software clients all over the
world!

BTX[®] (Bridge to XProtect)

Middleware that transforms third-party events into XProtect alarms



RECEIVE, TRANSPOSE, FILTER & CLASSIFY events / alarms from third-party systems

Handles many protocols & formats and convert devices alarm messages into XProtect-friendly event/alarm records

ASSOCIATE third-party events / alarms with XProtect devices, user-defined events, & PTZ presets

Link the incoming alarm to one of your XProtect so you can see what is happening when an alarm occurs

CHOOSE which actions are taken by XProtect based on alarm type and source

XProtect offers many features to respond to security events

VIEW and **REVIEW** third-party events / alarms from the XProtect Smart Client

BTX triggers XProtect features to make alarms viewable to security operators. It also communicates useful information about what happened and where it happened to improve situational awareness.



BTX – How it works

Middleware that transforms third-party events into XProtect alarms

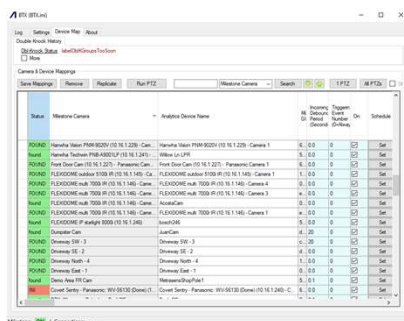
A third-party device detects an event-of-interest.

Ex. A Hanwha camera detects a person in an unauthorized area.



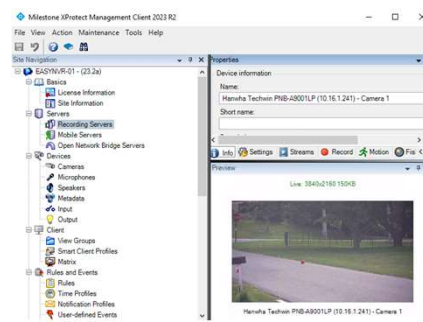
BTX middle-ware receives and classifies the event data.

Based on user-defined settings, filters, and schedules, BTX associates the device event to XProtect camera(s) and generates an alarm record.



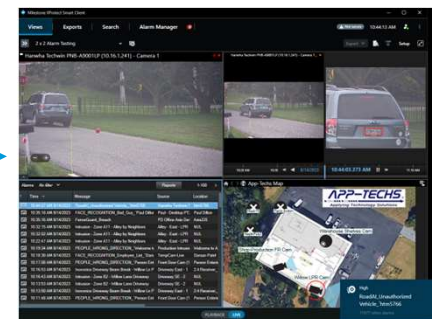
XProtect responds to the commands sent by BTX.

BTX instructs XProtect to trigger rules, which can initiate pre-defined security responses, (notifications, i/o actions, Smart Wall commands, etc)



The security operator views the third-party alarm from the Smart Client, as it occurs.

Pre-configured notifications, device actions, and view commands are received.



BTX[®] (Bridge to XProtect)

Middleware that transforms third-party events into XProtect alarms



ONE COPY of BTX can simultaneously integrate many products with XProtect



(Gunshot sensors)



(Access Control)



(IP Phones)



(Edge Analytics)



(Access Control)



(Security Panels)



(Edge Analytics)



(Emergency Phones)



(Analytics Encoders)



(Edge Analytics)



(LPR Analytics)



(Webhooks)



(Wireless sensors)



(Thermal Cams)



(Edge Analytics)



(Access Control)



(Analytics Encoders)



(Metal Detectors)



(Video Analytics)



(Access Control)



(Photoelectric Sensors)



(Parking Mgmt)



(LPR Analytics)



(Mass Notification)



(Ground sensors)



(Device Events)



(Audio Analytics)



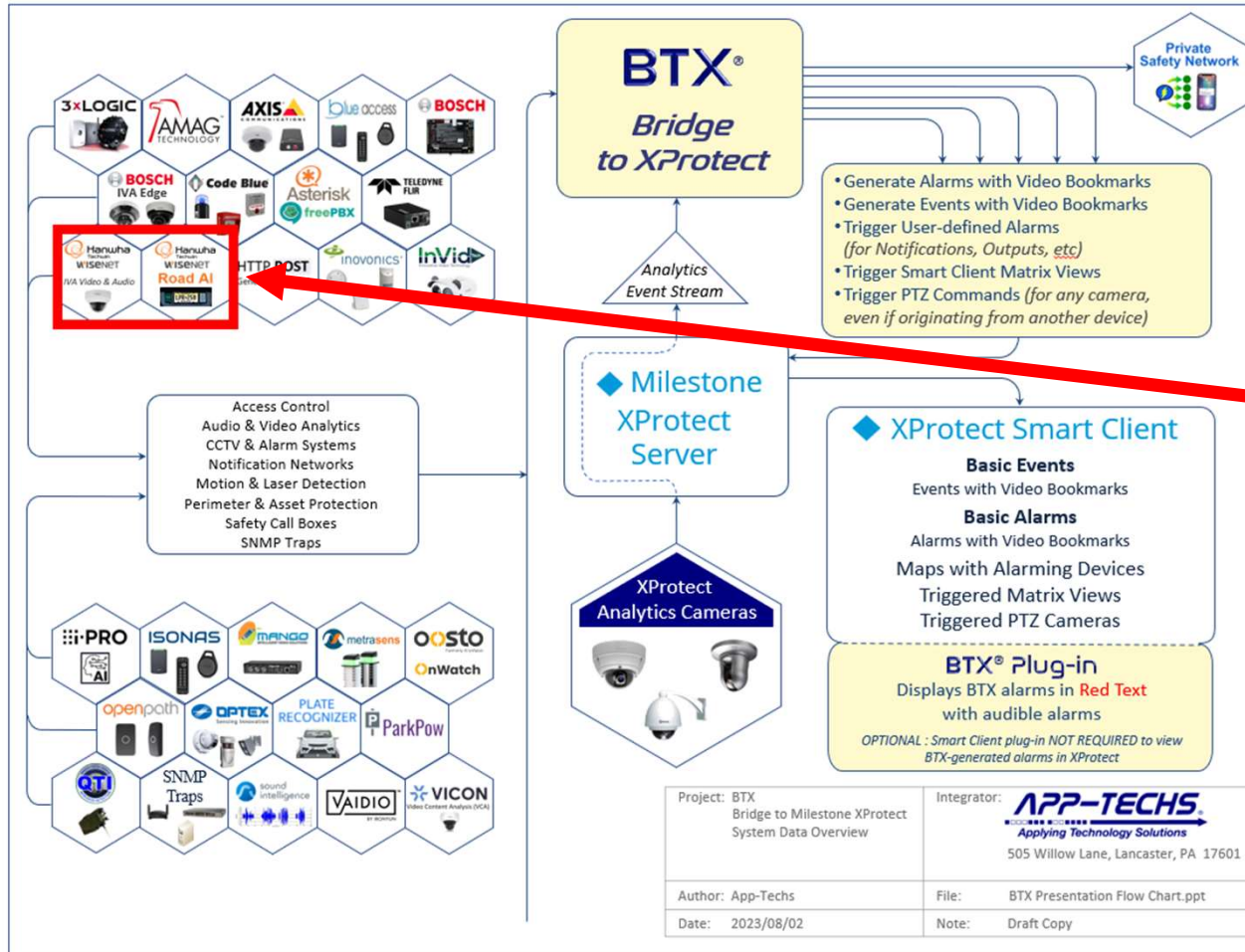
(Video Analytics)



(Edge Analytics)

Bridge-to-XProtect (BTX) Data Flow

Middleware that transforms third-party events into XProtect alarms



- Versatile third-party integration software for Milestone XProtect
- Integrates video analytics, access control, SNMP traps, sensors, IP Phones, I/O modules and more.
- Unlocks security features of Milestone XProtect for third-party products and software

Hanwha Integration with BTX

Receive real-time Hanwha edge analytics alerts in Milestone XProtect

- Advantages to integrating Hanwha edge analytics with BTX

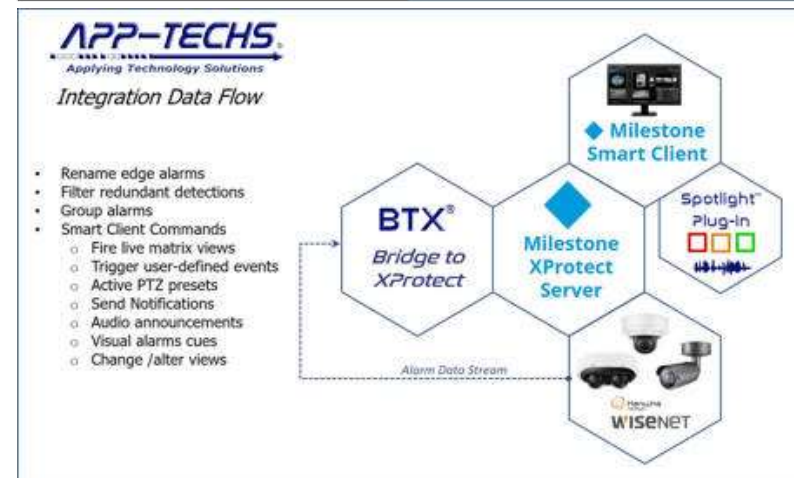
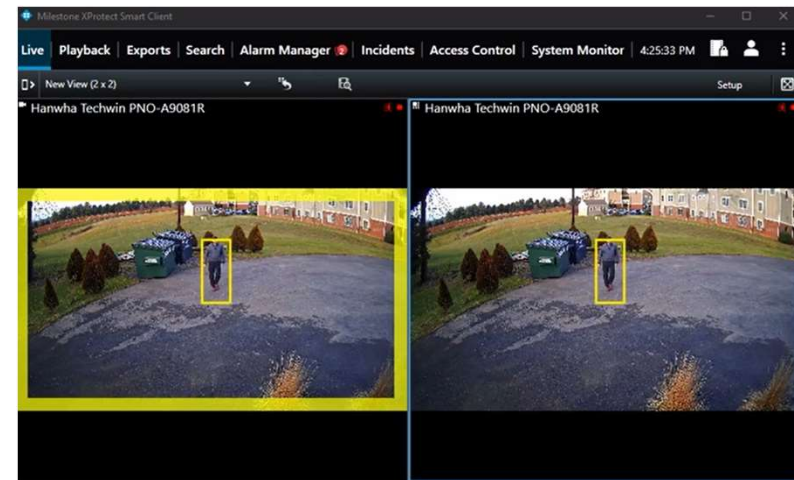
- Receive video analytics alerts as XProtect events / alarms
- NO XProtect “Plug-ins” required
- NO (or very minimal) setup required in XProtect Mgmt Client
- Rename alarms to provide site-specific information
- Create / manage schedule (no alerts from 8am-5pm, etc)
- Bypass limitations of native “driver-based” events in XProtect
 - Management of device “driver” events in XProtect can be time consuming and difficult to configure, troubleshoot, and maintain.

- Trigger XProtect user-defined events

- Make things happen in XProtect with notifications and other security responses

- Use with HANWHA XPROTECT PLUG-IN

- Hanwha’s plug-in is meant for retroactive person / object search
- BTX tells you *NOW*, Hanwha’s plug-in lets you search *LATER*



Demo Video

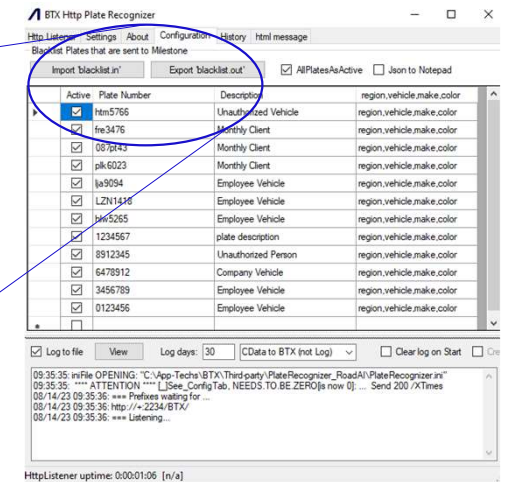
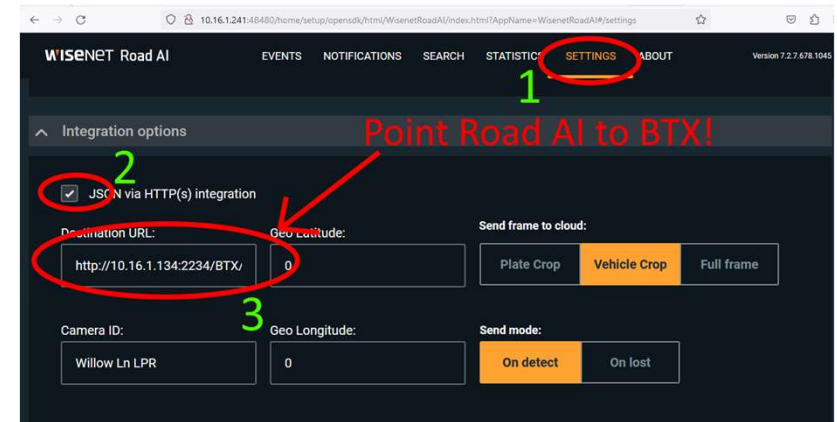


VIEW VIDEO HERE

https://www.app-techs.com/shopcontent.asp?type=hanwha_wisenet

REAL-TIME ALERTS WHEN A LICENSE-PLATE-OF-INTEREST IS DETECTED

1. BTX receives plate detection metadata from any number of Road AI cameras, all in REAL-TIME.
 - No need to manage license plate lists on each individual device.
 - Just point the Road AI software to BTX.
2. BTX centrally classifies license plate detections.
 - Create and manage your own plate lists within BTX.
 - BTX will identify if a detected plate (from any camera!) is on one our your lists.
3. Enter license plate of interest.
4. Specify a plate list





4. If a license plate matches a plate on your list(s) ...
5. BTX associates LPR detections with XProtect cameras

[illegible]

The screenshot shows the BTX (BTX.lin) interface. The top navigation bar includes 'Log', 'Settings', 'Device Map', and 'About'. The 'Double Knock History' section shows a table with columns 'Det Knock Status' and 'label/DetGroups/Too Soon'. The 'Camera & Device Mappings' section includes a 'Save Mapping' button, a 'Remove' button, a 'Replicate' button, a 'Run PTZ' button, a dropdown menu for 'Milestone Camera', a 'Search' button, and a '1 PTZ' button. A blue circle highlights the 'Status' column in the 'Camera & Device Mappings' table. The table has columns: 'Status', 'Milestone Camera', 'Analytics Device Name', 'Incoming M. Period', 'Debounce Number', 'E-Alert (On-Away)', 'On', and 'Schedule'. The table contains several rows of data, including 'Found', 'FOUND', 'FOUND', 'FOUND', and 'FOUND'.

6. BTX generates an XProtect alarm record with video bookmark AND triggers rules and other security actions appropriate for a given list.
 - (Open the gate for employee plates, email security if an unauthorized plate is detected, etc)

Time	Message	Source	Location
10:44:07 AM 8/14/2023	RoadAI_Unauthorized Vehicle_ htm5766	Hanwha Techwin F	htm5766
10:45:18 AM 8/14/2023	FACE RECOGNITION Bad Guy 'Paul Dillor	Paul - Desktop PT	Paul Dillor

Milestone XProtect Smart Client

Views Exports Search Alarm Manager

New Reports 10:44:13 AM

Export Setup

2 x 2 Alarm Testing

Hanwha Techwin PNB-A9001LP (10.16.1.241) - Camera 1

10:22 AM 10:22 10:22 10:44:03.373 AM 10:44:03

Alarms No filter Message Reports 1-190 App-Techs Map

Time	Message	Source	Location
10:44:03 AM 8/14/2023	Vehicle_Motion_Vehicle_TankZone	Hanwha Techwin PNB-A9001LP	
10:36:18 AM 8/14/2023	FACE_RECOGNITION_Bel_Guy_Paul Dicks	Pd Officer Area Cam	Amb225
10:32:16 AM 8/14/2023	Intrusion - Zone A11 - Alley for Neighbors	Alley - East - LPR	NUL
10:32:10 AM 8/14/2023	Intrusion - Zone A11 - Alley for Neighbors	Alley - East - LPR	NUL
10:27:47 AM 8/14/2023	Intrusion - Zone A11 - Alley for Neighbors	Alley - East - LPR	NUL
10:19:34 AM 8/14/2023	PEOPLE_Walking_DIRECTION - Welcome to A	Production Intrins	Welcome to A
10:19:30 AM 8/14/2023	FACE_RECOGNITION_Employee_List_Data	TenneyCam-Lens	Darshan Patel
10:17:06 AM 8/14/2023	PEOPLE_Walking_DIRECTION - Person Ent	Front Door Cam (1)	Person Enters
10:16:53 AM 8/14/2023	Intrusion Chimey Beam Break - Willow Ln P	Delivery SE - 1	2-4 Recovers
10:16:43 AM 8/14/2023	Intrusion - Zone B2 - Willow Lane Delivery	Delivery SE - 2	NUL
10:13:53 AM 8/14/2023	Intrusion - Zone B2 - Willow Lane Delivery	Delivery SE - 2	NUL
10:13:50 AM 8/14/2023	Intrusion Chimey Beam Break - Willow Ln P	Delivery East - 1	2-4 Recovers
10:11:48 AM 8/14/2023	PEOPLE_Walking_DIRECTION - Person Ent	Front Door Cam (1)	Person Enters

APP-TECHS Analyzing Technology Solutions

High RoadAI_Unauthorized Vehicle_hms766
1567 other alarms

PLAYBACK LIVE

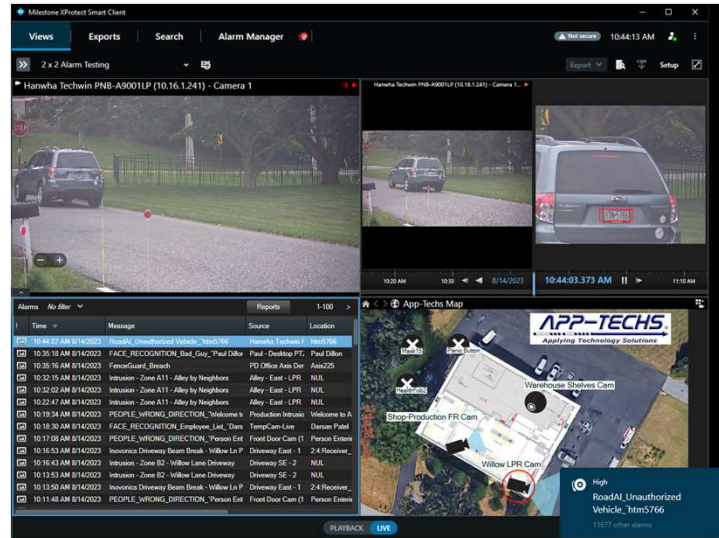
The screenshot displays the Milestone XProtect Smart Client interface. The top bar includes 'Views', 'Exports', 'Search', and 'Alarm Manager'. The main area is divided into four panes:

- Top Left:** Live camera view of a road with a car. A red arrow points to this pane with the text 'Display live camera view'.
- Top Right:** Alarm playback showing a sequence of frames from a detected event. A red arrow points to this pane with the text 'Alarm playback to review previous Road AI detections'.
- Bottom Left:** Alarm record table with columns for Time, Message, Source, and Location. A red arrow points to the first row, which includes the text 'Alarm record with video bookmark (indicates Plate # and list name)'.
- Bottom Right:** App-Techs Map showing a warehouse area with various camera locations marked. A red arrow points to a specific location on the map with the text 'Map icons indicate alarm location'.

A 'Toast' notification is visible in the bottom right corner, stating 'High RoadAI_Unauthorized Vehicle_ htm5766 11677 other alarms'. A red arrow points to this notification with the text '“Toast” notifications presented in real-time'.



Demo Video



VIEW VIDEO HERE

https://www.app-techs.com/shopcontent.asp?type=hanwha_wisenet_roadai

BTX Pricing

Simple, Straightforward, Scalable



BTX BASE SOFTWARE LICENSE \$1500

**ONE-TIME BASE LICENSE
COST, NON-RECURRING.**

NO PER-DEVICE PRICING

One instance of BTX can manage an unlimited amount of Milestone & third-party devices

NO SUBSCRIPTION- BASED PRICING

LICENSES ARE PURCHASED
PER MAC ADDRESS
Multiple BTX instances
running on different
servers requires separate
licensing

SOFTWARE UPGRADE PROTECTION (SUP) \$300 (1yr)

**KEEP YOUR SOFTWARE
CURRENT**

OPTIONAL, RECOMMENDED

Ensures compatibility with
the latest releases of
Milestone XProtect and
Microsoft Windows

INCLUDES GENERAL SOFTWARE TECHNICAL SUPPORT

SUP customers receive
free support to maintain
software

DISCOUNT PRICES AVAILABLE FOR 2-5 YR PURCHASE

Extend SUP coverage, no
yearly billing

BTX SOFTWARE UTILITIES INCLUDED

**BTX PURCHASES
INCLUDE SOFTWARE
UTILITIES**

AMAG Polling App

Bridge to Inovonics App

Code Blue HTTP Listener

Mango Listener

Ironyun Smart Client
Plugin

Active Guardian Listener

MXTEST

BTX Service

HTTP Listener Service

BTX®

Make the XProtect Smart Client *POP*

The **SPOTLIGHT** Plug-in by App-Techs TELLS you what is happening and SHOWS you where attention is required.

The **LATEST ALARM** Plug-in automatically displays an analytics detection snapshot and repeats a “before-and-after” video loop of the event

- **AUDIO ANNOUNCEMENTS**

User-defined, alarm-specific audio messages are announced directly from the Smart Client workstation speakers – based on alarm keyword matches

“Hanwha edge camera detects a person by the northwest gate entrance”

- **COLOR-CODED BOUNDING BOXES**

Visual alarm cues indicate the nature and/or severity of an event or alarm.

- ***POP-UP* WINDOWS and VIEW CHANGES**

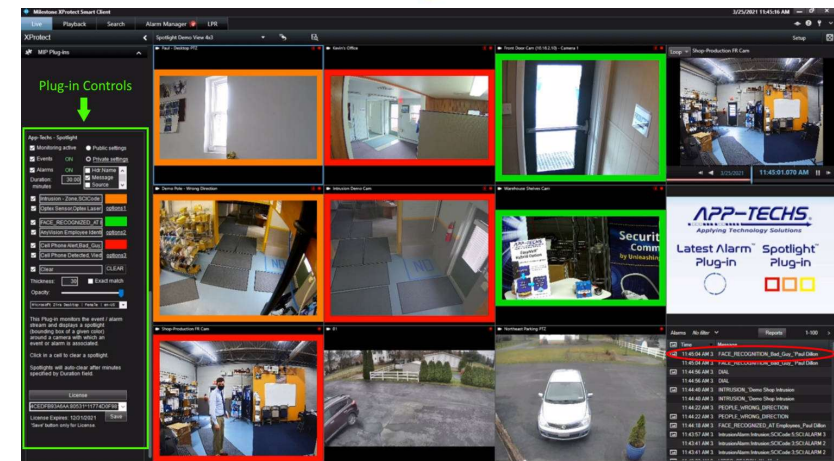
Alert an operator to an alarm by changing what is being viewed on-screen.

- **DISPLAY ANALYTICS DETECTION SNAPSHOTS**

See what analytics detected automatically and hands-free

- **BEFORE-AND-AFTER VIDEO LOOPS**

View what led to an event being triggered and what transpired after the event occurred, automatically and hands-free



VIEW DEMO VIDEO

<https://www.app-techs.com/shopcontent.asp?type=Spotlight>

BTX[®] (Bridge to XProtect)

Delivering security solutions by simplifying third-party integrations



Summary

1. Receive **REAL-TIME** Wisenet Road AI license plate detection alerts with BTX.
2. Simplify management of Hanwha edge analytics in XProtect with BTX.
3. App-Techs develops solutions to deliver **SITUATIONAL AWARENESS** to XProtect security operators.

Contact App-Techs

Sales, Service, & Technical Support



JUAN ACOSTA, NETWORK SPECIALIST (En Español e Ingles)
717-735-0848 x206
jacosta@app-techs.com



PAUL DILLON, VIDEO ANALYTICS SPECIALIST (English, Ingles)
717-735-0848 x204
dfritsch@app-techs.com



JENNY ROMANOSKY, DIRECTOR OF SALES
717-735-0848 x190
jromanosky@app-techs.com



TECHNICAL SUPPORT
717-735-0848 x2
support@app-techs.com



www.App-Techs.com
LinkedIn : App-Techs



APP-TECHS CORPORATION
505 WILLOW LANE
LANCASTER, PA 17601